

# CMI-SSP12050NH-SERIES

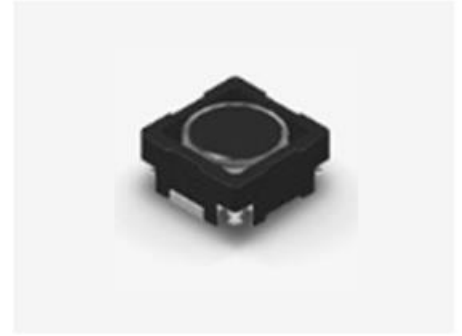


## Features

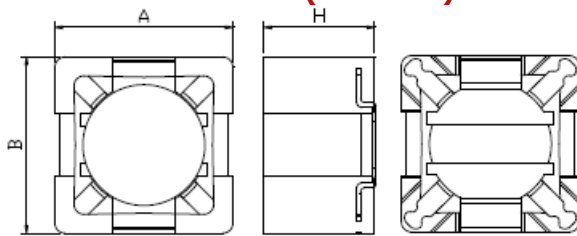
- ▶ SMD inductor
- ▶ It corresponds to High current.
- ▶ Simple and Shield structure.
- ▶ Available tape and reel for auto insertion.
- ▶ RoHS compliant.
- ▶ Halogen Free.

## Applications

- ▶ For small DC/DC converter (LCD/LED/OLED TV, PC, SETTOP etc).
- ▶ For Power supply circuits.

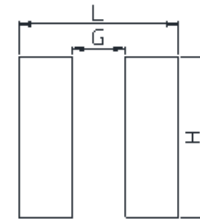


Dimension (Unit:mm)



A	B	H
12.0±0.3	12.0±0.3	5.0Max

Land Pattern (Unit:mm)



L	G	H
12.8	7.0	5.4

## Specifications

Part Number	Inductance (uH)	Tolerance (±)	DCR (mohm) ±20%	IDC1(A) Max	IDC2(A) Max	Test Frequency (Hz)
CMI-SSP12050NH-8R2N	8.2	30%	27	5.50		100k
CMI-SSP12050NH-100M	10	20%	28	4.50		100k
CMI-SSP12050NH-220M	22	20%	70	2.90		100k
CMI-SSP12050NH-330M	33	20%	97	2.70		100k
CMI-SSP12050NH-470M	47	20%	150	1.90		100k
CMI-SSP12050NH-680M	68	20%	220	1.50		100k
CMI-SSP12050NH-101M	100	20%	308	1.20		100k
CMI-SSP12050NH-121M	120	20%	380	1.10		100k
CMI-SSP12050NH-151M	150	20%	520	0.95		100k
CMI-SSP12050NH-221M	220	20%	700	0.80		100k
CMI-SSP12050NH-331M	330	20%	980	0.50		100k

• You can also contact us by e-mail : [coilmaster@coilmaster.com](mailto:coilmaster@coilmaster.com)

- All specifications are subject to change without notice.
- Update date : 2015.11.09

- IDC1: When based on the inductance change rate (approximately 20% below in the initial value)
- IDC2: When based on the temperature increase (Temperature increase of approximately 40°C by self heating)

---

Ilisan Sales Office (KOREA) +82)31-904-1444  
Shenzhen Sales Office (CHINA) +86)755-8663-6929  
Hungary Sales office (EUROPE) +36)30-913-7706

H.K Sales Office (HONGKONG) +852)2711-5551  
LA Sales Office (USA) +1)866-446-3586

- **You can also contact us by e-mail : [coilmaster@coilmaster.com](mailto:coilmaster@coilmaster.com)**
- All specifications are subject to change without notice.
- Update date : 2015.11.09