

CMI-SSP12080NH-SERIES

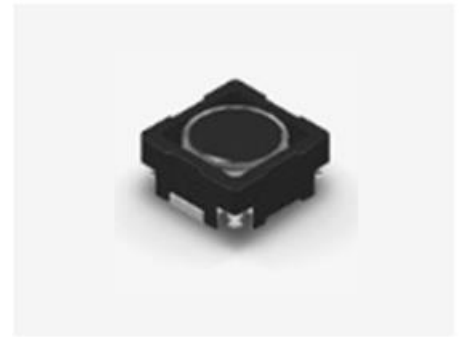


Features

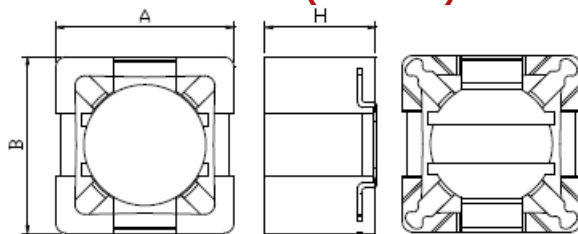
- ▶ SMD inductor
- ▶ It corresponds to High current.
- ▶ Simple and Shield structure.
- ▶ Available tape and reel for auto insertion.
- ▶ RoHS compliant.
- ▶ Halogen Free.

Applications

- ▶ For small DC/DC converter (LCD/LED/OLED TV, PC, SETTOP etc).
- ▶ For Power supply circuits.

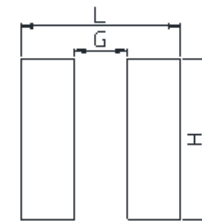


Dimension (Unit:mm)



A	B	H
12.0±0.3	12.0±0.3	8.0Max

Land Pattern (Unit:mm)



L	G	H
12.6	7.0	5.4

Specifications

Part Number	Inductance (uH)	Tolerance (±)	DCR (mohm) ±20%	IDC1(A) Max	IDC2(A) Max	Test Frequency (Hz)
CMI-SSP12080NH-100M	10	20%	18	6.60	6.10	100k
CMI-SSP12080NH-220M	22	20%	54	5.00	4.60	100k
CMI-SSP12080NH-330M	33	20%	60	4.10	4.00	100k
CMI-SSP12080NH-470M	47	20%	75	3.60	3.40	100k
CMI-SSP12080NH-680M	68	20%	112	2.90	2.80	100k
CMI-SSP12080NH-720M	72	20%	115	2.80	2.70	100k
CMI-SSP12080NH-101M	100	20%	204	2.40	2.20	100k
CMI-SSP12080NH-331M	330	20%	448	1.40	1.50	100k
CMI-SSP12080NH-681M	680	20%	789	0.97	0.97	100k

- IDC1: When based on the inductance change rate (approximately 20% below in the initial value)
- IDC2: When based on the temperature increase (Temperature increase of approximately 40°C by self heating)

Ilisan Sales Office (KOREA) +82)31-904-1444
 Shenzhen Sales Office (CHINA) +86)755-8663-6929
 Hungary Sales office (EUROPE) +36)30-913-7706

H.K Sales Office (HONGKONG) +852)2711-5551
 LA Sales Office (USA) +1)866-446-3586

• You can also contact us by e-mail : coilmaster@coilmaster.com

- All specifications are subject to change without notice.
- Update date : 2015.11.09

www.coilmaster.com