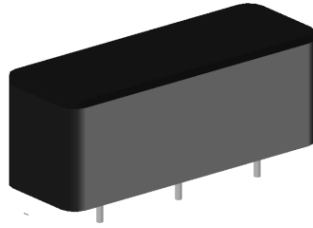


CMI-TSCC123514N-SERIES



Picture



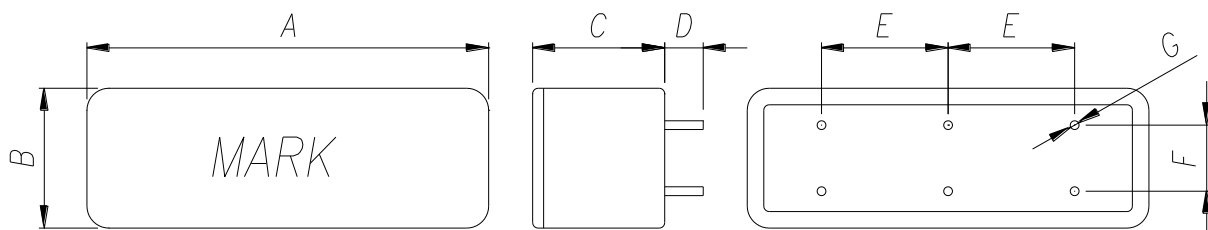
Features

- ▶ shielded construction
- ▶ Compact Size
- ▶ Multi channel type
- ▶ RoHS compliant

Applications

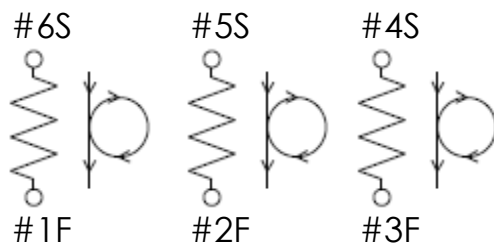
- ▶ LED Drive Circuit, LED Buck Boost, Slim TV SMPS

Dimension (Unit:mm)



A	B	C	D	E	F	G
36.7 ±0.5	12.5 ±0.5	14.0 Max	3.5 ±0.5	11.5 ±0.5	6.0 ±0.5	0.8 ±0.1

Schematic Diagram



Specifications

Part No.	Inductance (μH) ±10%	DCR (mΩ) Max.	Saturation Current(A)		Test Frequency (Hz)
			25 °C	100 °C	
CMI-TSCC123514N-322K	3200	4290	0.65A	0.60A	100k

- Saturation Current : Depends on inductance saturation.
(Inductance reduction from initial shall be under 20%)
- Test Condition : Temperature 20 °C ± 5 °C, Humidity 65% ± 20%

Ilsan Sales Office (KOREA) +82)31-904-1444
 Shenzhen Sales Office (CHINA) +86)755-8663-6929
 Hungary Sales office (EUROPE) +36)30-913-7706

H.K Sales Office (HONGKONG) +852)2711-5551
 LA Sales Office (USA) +1)866-446-3586

▪ You can also contact us by e-mail : coilmaster@coilmaster.com

- All specifications are subject to change without notice.
- Update date : 2018.08.04

www.coilmaster.com